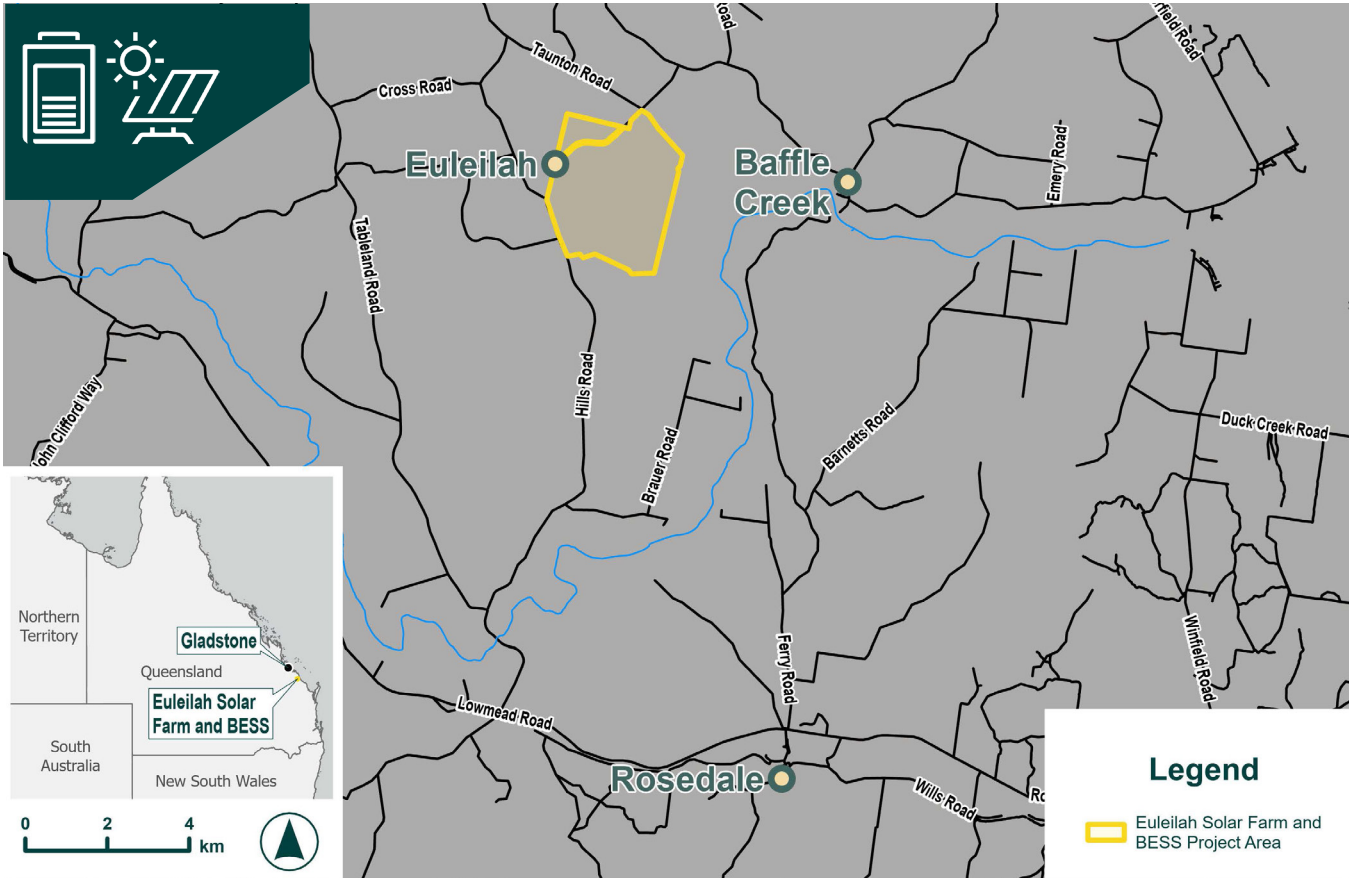


# Euleilah Solar Farm and Battery Project Information Sheet

June 2025



## The Project

OX2 is planning the Euleilah Solar Farm and battery, featuring a solar farm of up to 360MW and Battery Energy Storage System (BESS) with storage capacity of approximately 300MW across a project area of approximately 550 hectares.

The site is adjacent to Hills Road at Euleilah, QLD, approximately 12km north of Rosedale, 60km northwest of Bundaberg and approximately 90km southeast of Gladstone, on private land.

The Project is expected to deliver affordable, clean, and reliable electricity for Queensland while offering economic, social, and environmental benefits

The project will connect to QLD's electricity network via a switching station linked to the existing Gin Gin to Wurdong 275kV transmission line. A new overhead line will be required to connect the project to the existing network.

Construction is expected to commence in early 2028 and operations are expected to begin by end of 2029.

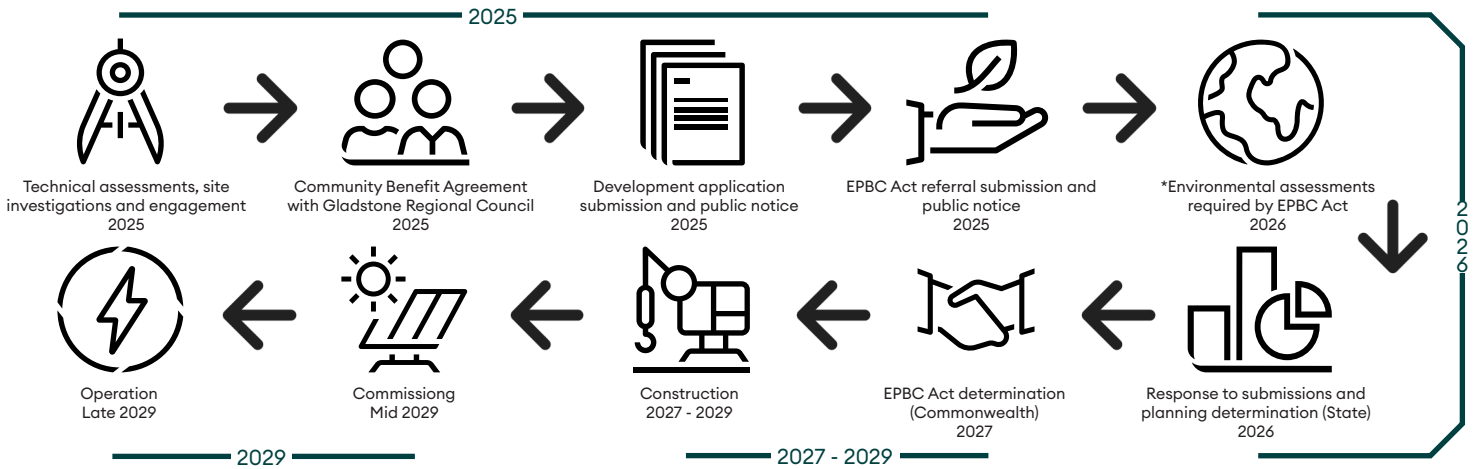
The BESS will store energy for use when it's needed most. It will provide reliable and affordable power, helping utilities quickly deliver electricity during peak times, outages, or shortages.

The BESS will improve energy security for QLD.



### Project Status

We are currently in the early stages of the Project’s development and anticipate starting construction in early 2028, and operations in late 2029. The estimated timeline for the Project’s lifecycle includes the following key phases:



\*The project may progress quicker if it is not considered a controlled action by the Commonwealth Government.

### Planning Approval Process

We intend to seek development approval under the Planning Act 2016 for QLD. We are in the early stages of development and are preparing the planning and technical assessments for a development application. The Project will also be referred to the Department of Energy Efficiency, Climate Change and Water under the Environmental Protection and Biodiversity Act 1999 (EPBC Act) to understand if Commonwealth approval is required.

### Project Benefits

- Powering up to 90,000 QLD homes with clean energy.
- Storing energy to provide electricity to power QLD homes when required.
- Creating up to 300 jobs during construction and up to 10 operational roles.
- Funding community benefit programs.
- Enabling greater integration of renewable energy into the grid to help reduce market volatility
- Supporting Qld’s renewable energy targets of 50% by 2030, 70% by 2032 and 80% by 2035.

### Fast Facts

|                                  |                                                             |
|----------------------------------|-------------------------------------------------------------|
| Local Government Area            | Gladstone Regional Council                                  |
| Location                         | 12km North of Rosedale and 60km Northwest of Bundaberg      |
| Traditional Custodians           | Bailai, Gurang, Gooreng Gooreng and Taribelang Bunda people |
| Solar Farm Capacity              | Up to 360MW (DC)                                            |
| Energy Production                | 805,685 MWh in Year 1                                       |
| Footprint Size                   | 550 hectares / 1359.08 acres                                |
| Number of PV Panels              | Approx 552,566                                              |
| Homes Supplied                   | Approx 90,000                                               |
| CO2 Saved                        | Approx 531,226 tonnes per year                              |
| Project Life                     | 40 years                                                    |
| Jobs created during construction | Approx 200                                                  |
| Jobs created during operation    | Approx 6                                                    |

The information provided in this factsheet was accurate at the time of publication; however, some details may change as the project progresses

### Community Benefits

OX2 is committed to delivering long-term benefits to the communities in which our projects are located. We look forward to collaborating with the community to design a benefit program that drives positive economic and social outcomes while providing lasting value.



OX2 Australia  
Suite 403, Level 4/65 Dover Street  
Cremorne VIC 3121  
1800 199 506

info-au@ox2.com  
OX2.com/australia



The project is located within the Traditional lands of the First Nations Bailai, Gurang, Gooreng Gooreng Taribelang Bunda people. OX2 wishes to acknowledge them as traditional custodians of the land and pay respect to Aboriginal and Torres Strait Islander people past and present. We acknowledge their continuous connection to Country and wish to work together in the spirit of reconciliation.



Signatory of the CEC Best Practice Charter for Renewable Energy Projects